



User Manual

Copyright © 1997-98 ELSA AG, Aachen (Germany)

While the information in this manual has been compiled with great care, it may not be deemed an assurance of product characteristics. ELSA shall be liable only to the degree specified in the terms of sale and delivery.

The reproduction and distribution of this handbook and the use of its contents, as well as that of the software included with the product, is subject to ELSA written authorization. The right to modifications in the interest of technical progress is reserved.

ELSA is EN-ISO 9001 certified. The accredited TÜV CERT certification authority has confirmed ELSA conformity to the worldwide ISO 9001 standard in certificate number 09 100 5069, issued on 16 May 1995.

Trademarks

AutoCAD[®] and Autodesk[®] are registered trademarks of Autodesk, Inc.

Windows[®], Windows[®] 95, Windows NT[®] and Microsoft[®] are registered trademarks of Microsoft, Corp.

OpenGL[®] is a registered trademark of Silicon Graphics, Inc.

All other names mentioned may be trademarks or registered trademarks of their respective owners. The ELSA logo is a registered trademark of ELSA AG. Subject to change without notice. No liability for technical errors or omissions.

ELSA AG
Sonnenweg 11
D-52070 Aachen
Germany

Internet www.elsa.de

ELSA Inc.
2231 Calle De Luna
Santa Clara, CA 95054
USA

Internet www.elsa.com

Aachen, May 1998

Preface

Thank you for placing your trust in this ELSA product.

With the *GLoria Synergy* you have selected a graphics board which was designed as an entry product for professional CAD and visualization. The graphics processor on the board ensures high-speed generation of on-screen graphics making this board ideal for advanced CAD and visualization applications as well as for fast animation. ELSA products are subject to the highest of standards in production and quality control which are the foundation for consistently high product quality *GLoria Synergy*.

About this Manual

This manual provides all the information you will need to get the best out of your ELSA graphics board. For instance, which resolution is best for which monitor, or how is the board upgraded? The accompanying ELSA utility programs are described, and you will find detailed information about 3D acceleration.

Changes to this Manual

ELSA products are subject to continual further development. It is therefore possible that the information printed in this manual is not current in all respects.

Current information about updates can always be found in the README files on the ELSA CD.

If you have further questions or need additional help, you can rely on our online services which are available to ELSA customers. Look for information in the appendix "Advice and Help".

In very urgent cases the ELSA Hotline can be reached under the following numbers:

1-800-272-ELSA

or from outside the USA:

+1-408-919-9100





Before you read on...

The installation of the GLoria Synergy hardware and software drivers is described in full in the Quick Start guide which accompanies this manual. You should refer to that document before attempting to install your board, and before reading this manual

Contents

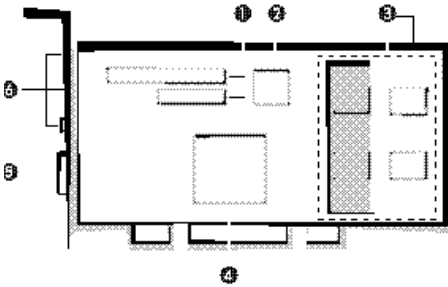
Introduction	1
A Look at the <i>GLoria Synergy</i>	1
Brief Description and Characteristics	1
<i>GLoria Synergy</i> Highlights	2
Package Contents	2
System Requirements	3
CE Conformity and FCC Radiation Standard	4
Installing the Graphics Board and Adding Memory	5
For Your Safety	5
Installing the Graphics Board	5
Memory Expansion	5
When Will I Need More Memory?	5
Installing the Memory Module in the <i>GLoria Synergy</i>	6
After Installing the Drivers	7
Software Installation from the CD	7
The Right Settings	7
What are Your Options?	8
What Makes Sense?	8
Changing the Resolution	9
Windows 95	9
Windows NT 4.0	12
OS/2 Warp 4	13
Video—What's In, What's Out?	15
Signal Interchange—An Overview	15
Video-In	16
Video-Out	16
Input and Output Connectors of the <i>GLoria Synergy</i>	16
Connectors on the Mounting Bracket	17
Connecting to the Video Inputs	17
Connecting to the Video Outputs	17
ELSA Video Settings	19
Video Display on the Monitor	19
How Does the Video Image Get Onto the Computer Monitor?	21
The Computer Display on TV/Video	22
Video-In under OS/2	23
Installation	23
Programs for Recording Video	24

Useful Stuff and More	25
Neat, Meetings!	25
MainActor—The Principal Performer.....	26
In What Role?	26
MainActor has Style	26
ELSA TOOLS.....	27
<i>ELSA EnDIVE Set</i>	27
<i>ELSA DESKman</i>	27
<i>ELSA POWERdraft</i> for AutoCAD®.....	28
SmartFocus	28
Installation	28
<i>ELSAview 3D</i>	29
What Does <i>ELSAview 3D</i> Offer ?	29
Installation	30
ELSA Driver for 3D Studio MAX/VIZ.....	31
Technical Data	33
ELSA Graphics Board Addresses	33
The VGA D Socket	33
The S-Video Connector	34
The VMI Bus.....	34
All About Graphics	35
3D Graphics Representation.....	35
The 3D Pipeline.....	35
3D Interfaces.....	37
What APIs Are Available?	38
Direct 3D	38
Heidi	39
OpenGL.....	39
Color Palettes, TrueColor and Gray Scales.....	40
VGA	40
DirectColor	40
VESA DDC (Display Data Channel)	41
DDC1	41
DDC2B.....	42
DDC2AB	42
Video Signal Formats.....	42
Composite Video	42
S-VHS.....	42
IEEE 1394.....	43
Video Formats: Compressors At Work.....	43
RGB16	43

YVU9	43
ELSA Compression	44
<hr/>	
Appendix	45
Frequently Asked Questions and Answers	45
Installation Problems with your ELSA Graphics Board.....	45
Problems with Windows 95.....	45
Video Function Problems	47
General Questions and Answers	47
Advice and Help	48
Who to Contact?	48
The ELSA LocalWeb.....	49
Driver Updates	50
Repair?	50
DOC—Declaration of Conformity	51
Warranty Conditions	53
<hr/>	
Glossary	55
<hr/>	
Index	59

Introduction

A Look at the *GLoria Synergy*



Brief Description and Characteristics

- ❶ The VMI interface
- ❷ The BIOS carries out many tasks, including the identification of the *GLoria Synergy* to the computer. The Flash-BIOS equipment enables quick and easy upgrades
- ❸ Display memory: 4 MB SGRAM, with socket for expansion to 8 MB
- ❹ Graphics processor: PERMEDIA 2 from 3DLabs with integrated GLINT Delta chip
- ❺ Monitor connector
- ❻ Video-In/Video-Out connectors (depending on the model)

***GLoria Synergy* Highlights**

- Pixel clock frequency up to 230 MHz
- In graphics modes, ergonomic refresh rates over 100 Hz are possible
- Plug&Play integration
- Recognition of VESA-DDC compatible monitors (DDC1 and DDC2B)
- Supports energy-saving monitors with VESA DPMS compatibility
- ELSA drivers for Windows NT, Windows 95, and OS/2 Warp 4
- ELSA display list driver *POWERdraft* for AutoCAD
- *ELSAview 3D* for AutoCAD
- Hardware support for the 3D graphics standards Direct3D, OpenGL, and Heidi
- Hardware accelerated 3D 16-bit Z buffering, Gouraud shading, and texture mapping
- Product support via ELSA LocalWeb, Internet WWW site, newsgroups, and CompuServe forum
- Six-year warranty
- This board complies with the CE and FCC rules and has the following FCC IDs:

With video equipment:

- PCI bus: KJGP2VIVoup (4 MB), KJGP2VIVO (8 MB)
- AGP bus: KJGP2VIVoupAGP (4 MB), KJGP2VIVOAGP (8 MB)

Without video equipment:

- PCI bus: KJGP2EASY (4/8 MB)
- AGP bus: see page 51

Package Contents

Before installing your ELSA graphics board, please ensure that nothing is missing from your package. It should contain the following:

- documentation: quick start guide and manual
- graphics board
- **Only with video-equipped graphics boards:**
 - Video adapter cable from S-Video (Hosiden) to Composite (Cinch)
- CD-ROM with installation software, drivers, and utilities

If any part is missing please contact your dealer.

ELSA reserves the right to change the supplied contents without prior notice.

System Requirements

- **Computer:** ELSA graphics boards are suited for operation in computers with Intel Pentium or Pentium-compatible CPUs.
- **Bus:** Your computer's bus system needs PCI-2.0 compliant bus slots (with bus master capability) or an AGP bus.
- **Monitor:** ELSA graphics boards work with the standard IBM VGA compatible horizontal scan frequency of 31.5 kHz when booting and in DOS operation. In addition, the monitor must be capable of displaying the graphics mode you select.

CE Conformity and FCC Radiation Standard

CE

This equipment has been tested and found to comply with the limits of the European Council Directive on the approximation of the laws of the member states relating to electromagnetic compatibility (89/336/EEC) according to EN 55022 class B.

FCC

This equipment has been tested and found to comply with the limits for a Class B digital device pursuant to Part 15 of the Federal Communications Commission (FCC) Rules. The testing of this compliance involved the following procedures:

- Equipment Authorization

PCI, with video function	KJGP2VIVOU (4MB), KJGP2VIVO (8MB)
AGP, with video function	KJGP2VIVOUAGP (4MB), KJGP2VIVOAGP (8MB)
PCI, without video function	KJGP2EASY (4/8MB)
- Declaration of Conformity

AGP, without video function	see page 51
NLX, without video function	see page 52

CE and FCC

These limits are designed to provide reasonable protection against radio frequency interference in a residential installation. This equipment generates, uses, and can radiate radio frequency energy. It may interfere with radio communications if not installed and used in accordance with the instructions. However, there is no guarantee that interference will not occur in a particular installation. If this equipment does cause interference to radio or television reception (this can be determined by turning this equipment off and on), the user is encouraged to try to correct the interference by one or more of the following measures:

- Reorient or relocate the receiving antenna.
- Increase the distance between this equipment and the receiver.
- Connect the equipment to an outlet on a circuit other than that to which the receiver is connected.
- Consult your dealer or an experienced radio/TV technician.
- Caution: To comply with the limits for an FCC Class B computing device, always use a shielded signal cable.



Caution to the user: The Federal Communications Commission warns the user that changes or modifications to the unit not expressly approved by the party responsible for compliance could void the user's authority to operate the equipment.

Installing the Graphics Board and Adding Memory

For Your Safety

Please take note of the following guidelines in the interests of your safety and the correct operation of your new ELSA graphics board and your computer system:

- Because expansion boards are sensitive to static electricity, it is important to discharge (earth) yourself before touching the expansion board with your hands or tools. Simply touch a metal part of your computer housing.
- Always unplug the power cable before opening your computer so as to avoid contact with hazardous voltages.
- The devices should only be installed in or connected to those computers that fulfil all necessary technical requirements.
- Only use a shielded monitor cable to connect the monitor to the computer.
- Make sure that the slot into which you intend to install your board complies with the PCI specifications.
- During the warranty period, repairs should only be made by ELSA, otherwise your warranty and your entitlement to ELSA's product support will be void.



Changes or modifications to the device not expressly approved by ELSA AG can void your authority to operate the equipment.

Installing the Graphics Board

Installation of the *GLoria Synergy* is described in the enclosed Installation Guide. This will explain how to fit the board in your computer and how to install the ELSA drivers.

Memory Expansion

The *GLoria Synergy* can be equipped with 4 or 8 MB SGRAM. If your board has an empty socket then it is equipped with 4 MB. If you wish to improve the performance of your graphics board, you can fit the free socket with additional SGRAM.

When Will I Need More Memory?

Generally it is useful to expand the graphics board memory if you wish to use a higher resolution with greater color depth. When you are working in 3D, the Z buffer will benefit from the additional memory. This will give you greater speed in texture representation.

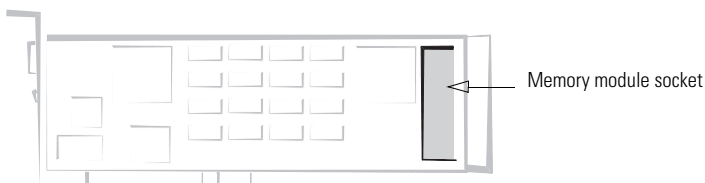


Only use the memory expansion developed by ELSA for upgrading the graphics memory on ELSA graphics boards. ELSA accepts no responsibility for warranty and support if you use third-party memory chips.

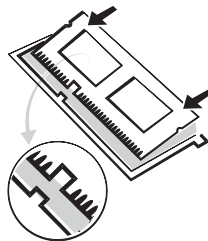
The memory chips developed by ELSA are specially designed for use in ELSA graphics boards. This practically excludes the risk of problems such as incorrect colors for individual pixels. Please consult our Support service in the unlikely event that you still experience video errors.

Installing the Memory Module in the *GLoria Synergy*

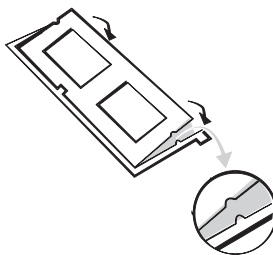
The socket for the 4MB memory module on the *GLoria Synergy* is located at the back end of the graphics board (opposite the mounting bracket).



- ① The memory module has two memory chips on each side. Match up the position of the notch on the memory module with the peg on the socket. Slide the memory module gently and at a slight angle into the socket. Push the module forwards until you can no longer see the memory module contact strip.



- ② Carefully press the back end of the memory module downwards until you hear it snap into the retainers on each side.



After Installing the Drivers

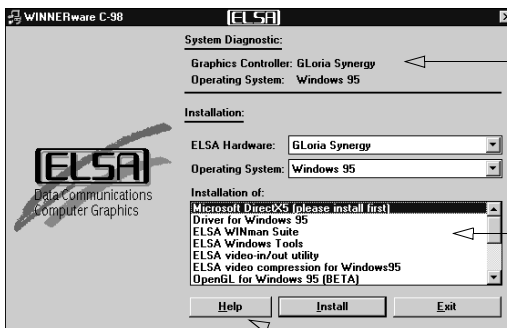
In this chapter you will find descriptions of

- where you can find the software for operating your ELSA graphics board,
- the performance characteristics of your graphics board, and
- how you can most effectively tuning for the combination of monitor and ELSA graphics board.

Software Installation from the CD

Once you have successfully completed the steps described in the quick start guide, your *GLoria Synergy* is integrated into your computer system with installed drivers. In this way, you have very likely come to know the program ELSA CD-Setup. This program should start automatically after inserting your *WINNERware* CD, but if not, then you can run the CDSETUP.EXE from the CD's root directory.

CD-Setup recognizes the operating system and the ELSA graphics board. Based on this information, the program displays the driver and the selection of software supported. All of these programs are on the *WINNERware* CD: Just highlight the items you want, and click on **Install**.



Graphics board and operating system are identified

List of software which can be installed

Information about the entries listed

The Right Settings

Our tip is: Invest a little time at this stage and you won't regret it. Take your time to set up your system just right. Your eyes will thank you for it, and you are guaranteed to have more fun in front of your screen.

To set up your system properly, the following questions should be answered:

- What is the maximum resolution I can set on my system?
- Which color depth do I want to use?
- What value should I set for my display refresh rate?

To help you find the answers to these questions, this chapter has been divided according to the operating systems available. Just look for the section about the operating system you use. All the information you need is here and all the software you need, if not already a part of your operating system, is on the *WINNERware* CD.

What are Your Options?

The tables below show the maximum possible resolutions for the ELSA graphics board. Note that these resolutions cannot be achieved under all operating conditions..

Color Depth:	Max. Refresh Rate (Hz) / Z-Buffer, Double Buffering					
	256 Colors		HighColor		TrueColor	
SGRAM:	4MB	8MB	4MB	8MB	4MB	8MB
1920 x 1200 ¹⁾	73/–	73/–	–/–	73/–	–/–	–/–
1920 x 1080	79/–	79/–	–/–	79/–	–/–	–/–
1792 x 1120	80/–	80/–	80/–	80/–	–/–	–/–
1600 x 1200	85/–	85/✓	85/–	85/–	–/–	–/–
1600 x 1000 ¹⁾	101/–	101/✓	101/–	101/–	–/–	–/–
1536 x 960 ¹⁾	110/–	110/✓	110/–	110/–	–/–	–/–
1280 x 1024	130/✓	130/✓	130/–	130/✓		73/–
1152 x 864	171/✓	171/✓	171/–	171/✓	100/–	100/–
1024 x 768	217/✓	217/✓	217/–	217/✓	127/–	127/✓
800 x 600	300/✓	300/✓	300/✓	300/✓	208/–	208/✓

¹⁾ Resolutions for 16:10 wide-format monitors (e.g. ELSA ECOMO 24H96)

HighColor = 65,536 colors, TrueColor = 16.7 million colors

What Makes Sense?

There are some basic ground rules for you to follow when setting up your graphics system. On the one hand, there are the ergonomic guidelines, although nowadays these are met by most systems, and on the other hand there are limitations inherent to your system, e.g. your monitor. The question of whether your applications need to run using large color depths—perhaps even TrueColor—is also important. This is an important condition for many DTP or CAD workstations. We recommend that games and “normal” Windows applications are operated in HighColor with 65,536 colors.

“More Pixels, More Fun”

This is an opinion which is widespread, but which is not entirely true under all circumstances. The general rule is that a refresh rate of 73 Hz meets the minimum ergonomic requirements. The resolution to be selected also depends on the capabilities of your monitor. The table below is a guide to the resolutions you might select:

Monitor size	Typical image size	Minimum resolution	Maximum resolution	Ergonomic resolution
17"	15.5" - 16"	800 x 600	1024 x 768	1024 x 768
19"	17.5" - 18.1"	1024 x 768	1280 x 1024	1152 x 864
20"/21"	19" - 20"	1024 x 768	1600 x 1200	1280 x 1024
24"	21" - 22.5"	1600 x 1000	1920 x 1200	1600 x 1000

Changing the Resolution

You set the resolution of your graphics board in the Control Panel under Windows.



The GLoria Synergy is normally supplied with software on a CD-ROM. You will find all the utilities described in this manual on the WINNERware CD—unless they are a component of the operating system.

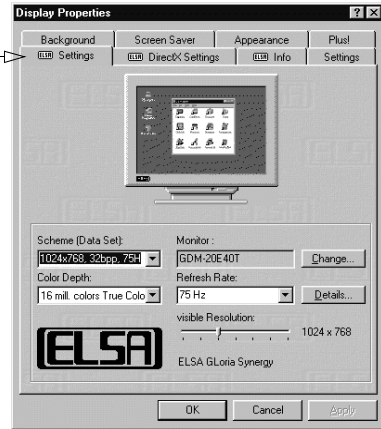
Windows 95

Under Windows 95, the 'ELSA Settings', which you may use to set up your graphics system, are automatically added to the Control Panel when you install the graphics drivers. The 'ELSA settings' function brings a significant benefit: Once you have specified the graphics board model and the monitor data, the program will automatically detect which settings are possible and which are not. This means, for instance, that it is impossible for you to select an incorrect refresh rate which might damage your monitor.

- ① Use the commands **Start ► Settings ► Control Panel**
- ② In the Control Panel you will find the **Display** program, among others. Double-click on the icon to open the **Display Properties** window which features various tabs.

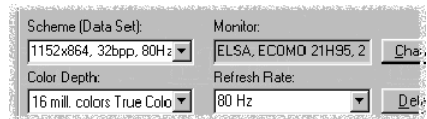
- ③ Click on the '**ELSA** Settings' tab.

'**ELSA** Settings' has all the options for setting up the graphics board for your monitor.



You must check or set the following settings:

- the color depth
- the monitor type
- the monitor resolution (Scheme, Data Set) and
- the refresh rate



Selecting the Monitor

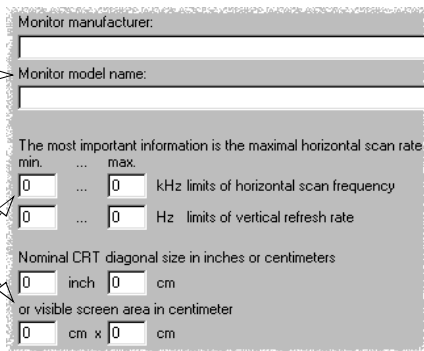
First click on **Change...** to call up the database of monitor types. You will be presented with a list of monitor manufacturers and monitor models. If the manufacturer of your monitor is listed, click on the name and select your monitor model. You have two options if your monitor is not listed. Select '_Standard monitor' from the top of the list as your monitor manufacturer. Then select the resolution required as your monitor type.

The second option requires that you know the technical specifications for your monitor. Consult your monitor manual, to ensure that you have the necessary information correct. Click on **Change...** in the 'Monitor type database' window. In addition to the information regarding the monitor manufacturer, and the model designation, you will have to enter

the frequency ranges for the horizontal and vertical scan frequencies and specify the diagonal size of your monitor.

You can enter the monitor manufacturer and model type here if your monitor type is not listed in the monitors database.

The vertical and horizontal frequency ranges and the diagonal size of the screen are the important settings.



Monitor manufacturer:

Monitor model name:

The most important information is the maximal horizontal scan rate

min.	...	max.	
0	...	0	kHz limits of horizontal scan frequency
0	...	0	Hz limits of vertical refresh rate

Nominal CRT diagonal size in inches or centimeters

0	inch	0	cm
---	------	---	----

or visible screen area in centimeter

0	cm x	0	cm
---	------	---	----

Annotations: An arrow points from the text 'You can enter the monitor manufacturer and model type here...' to the 'Monitor model name:' field. Two arrows point from the text 'The vertical and horizontal frequency ranges and the diagonal size of the screen are the important settings.' to the frequency and size input fields.



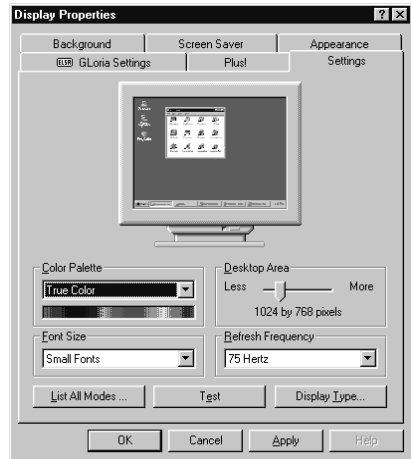
Check your entries for the image frequencies carefully, as otherwise you could damage your monitor. Look these up in your monitor manual or consult the monitor manufacturer.

Windows NT 4.0

The settings for the graphics driver are included in the Control Panel under Windows NT 4.0. Use the commands

Start ► Settings ► Control Panel

to open a dialog box, in which you will find the **Display** program, amongst others. Double-click on the icon to open an index card with a number of different tabs. Click on the 'Settings' tab.



You can select the possible settings for 'Color Depth', 'Font Size', 'Resolution' and 'Refresh Rate' from this dialog box. The available selection is determined by the ELSA driver you have installed. You should always check the configuration you have selected by clicking on the **Test** button.



You will find further information on how to customize your graphics settings under Windows NT 4.0 in your system manual.

OS/2 Warp 4

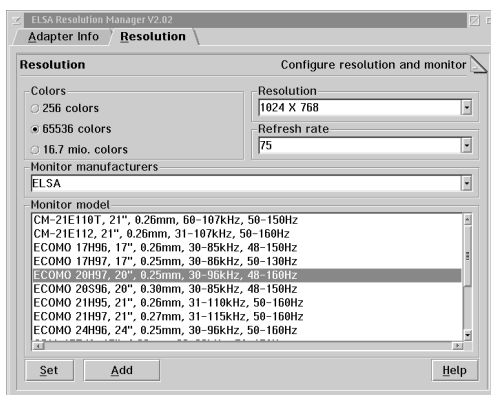
ELSA supplies a proprietary GRADD driver for OS/2 Warp 4.

- ① Install the ELSA GRADD driver by selecting the drive and directory containing the driver files for your graphics board.
- ② Start the **SETUP.EXE**.



You can call up the README file by clicking on the 'Introduction' tab. This file contains further information about the ELSA GRADD driver and the operation of the Setup program.

Once the ELSA driver is installed you will find a new folder on your desktop containing the ELSA utilities described here. Start the program 'ELSA Resolution Manager' from this menu.



The *ELSA Resolution Manager* enables the easy configuration of the OS/2 graphic user interface. Under 'Resolution' the monitor can be selected and the required resolution defined. It is important to test the resolution with **Set**. Untested resolutions will not be installed. The system must be restarted for the changes to come into effect.



Please be certain that the information about the monitor is correct and entered in full. This is the only way to be sure of avoiding any damage to the monitor through overload.

Video—What's In, What's Out?

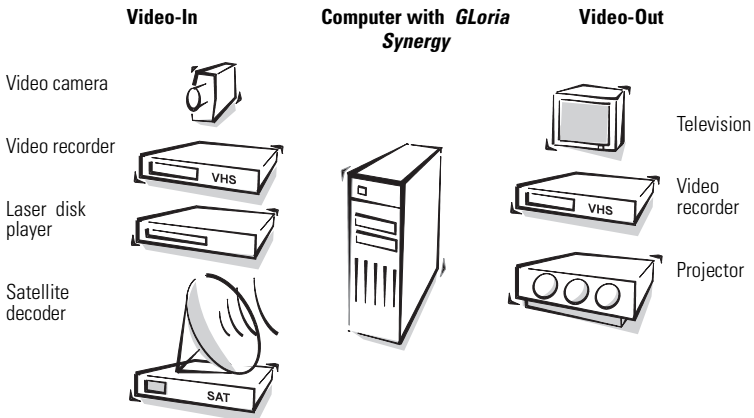


This section is relevant only for those boards equipped for video functionality. You can check if this is the case with your board by looking at the connectors on the mounting bracket of the GLoria Synergy. If your board is fitted with a VGA connector only, then you unfortunately cannot make use of the functions described here.

The *GLoria Synergy* can process video signals under Windows 95/ NT 4.0 and OS 2 Warp 4. The first part of this section describes how to connect devices for video signal input and output and which sockets apply. The second part concerns the software setup. What do you have to do to capture video sequences and how do you make a certain application window appear on a video projector.

Signal Interchange—An Overview

Below we will show you just how open the *GLoria Synergy* is to all sides.



The illustration shows you, on the left, the input devices which can be connected to the graphics board. Your ELSA graphics board has three inputs, two of these are composite video inputs and one is a S-VHS input. The board is capable of processing the PAL, NTSC and SECAM video standards.

On the right, you see the devices capable of displaying the VGA signal from the computer. You can send the content of the computer screen through the video-out sockets to a television, a video recorder or a projector.

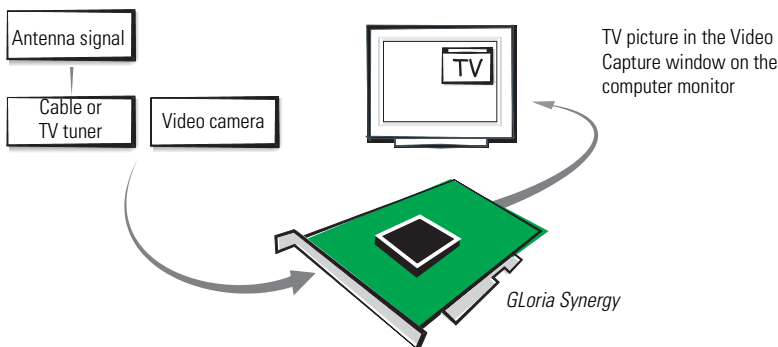
*You can operate your *GLoria Synergy* with a monitor and a TV simultaneously.*



Video-In

Before the *GLoria Synergy* can react, the signals must be clear. It is of no use if you try to connect the antenna to the *GLoria Synergy*. The antenna's HF signal transmits information for several channels, and not a simple, unambiguous video signal as required by the *GLoria Synergy*. If you wish to display a TV picture on your monitor, then you cannot simply take the antenna-output of your video recorder. Instead, the video recorder's Scart connector must be connected with the composite input of the *GLoria Synergy*.

Example Video Signal processing with *GLoria Synergy*



Video-Out

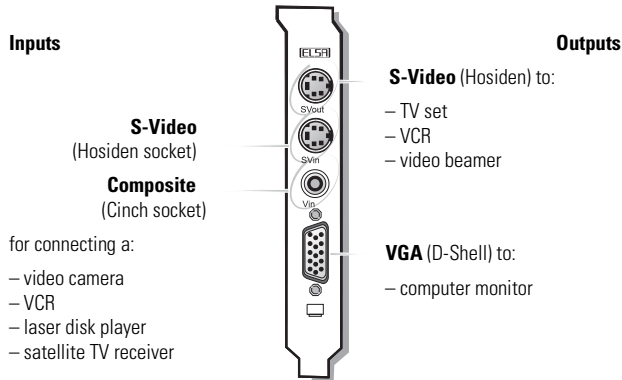
Unlike a computer monitor, a television set is not able to process the VGA signal from a graphics board. Comparing the 15-pin output for the monitor with a coaxial antenna cable makes it immediately clear that the signals are handled in fundamentally different ways. The *GLoria Synergy* is equipped with its own translator, a chip which converts VGA signals for the television. This signal can of course be used by other devices such as projectors with a video input or a video camera.

Input and Output Connectors of the *GLoria Synergy*

After getting a general overview in the previous section, we will now describe in detail the input and output connectors on the *GLoria Synergy*. If, for example, you wish to connect an older video camera and you have trouble finding a suitable adapter, then the description of the pin assignment for various connectors in the appendix of this manual may be of use to you.

Connectors on the Mounting Bracket

On the bracket of the *GLoria Synergy* you will find the following connectors:



When connecting to the Video-In or Video-Out of the *GLoria Synergy*, ensure that you only use special cable connections suitable for video signals.

Connecting to the Video Inputs

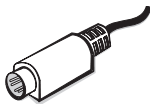
The *GLoria Synergy* features two video input connectors; an S-Video socket for S-Video and S-VHS signals, and a second socket for composite and VHS signals, otherwise known as FBAS. Connecting a video device to an input socket may, under some circumstances, be possible only with the help of an adapter. The following table should help you to judge this.

Video Source Device	Type	Source Device Connector	Input Socket on the <i>GLoria Synergy</i>
Video camera	S-VHS, Hi8	Hosiden	→ S-Video
	all others (e.g. VHS)	Cinch, mini-DIN, proprietary	→ Composite
VCR	S-VHS	Scart, Hosiden	→ S-Video
	VHS	Scart, Cinch	→ Composite
Laser disk		Scart	→ S-Video
Satellite receiver		Scart	→ Composite

Connecting to the Video Outputs

Apart from the VGA socket for connecting your computer's monitor, the *GLoria Synergy* features an additional video output socket. You can connect video players or recorders

equipped with an S-Video input or with a Cinch socket (composite input). You can use the supplied adapter for this. Be sure to check the Connector settings for the Video-Out.

**Hosiden plug**

Plug for connecting video signal sources and video players or recorders to the *GLoria Synergy*. Your graphics board is supplied with a special adapter (Hosiden plug → Cinch socket) for supplying composite inputs with S-Video signals.

**Cinch socket**

With the adapter's Hosiden plug connected with the S-Video output of the *GLoria Synergy*, you can use a Cinch cable from a video player or recorder and connect this to the Cinch socket on the adapter.

**Cinch plug**

You need a cable with a Cinch plug to feed a composite video signal to the


Connection to a TV Set

You can connect any normal TV set to the *GLoria Synergy*. Refer to the operating manual for your television to find out which video standards it supports, or ask your TV dealer. You can connect PAL or NTSC devices to the *GLoria Synergy*.

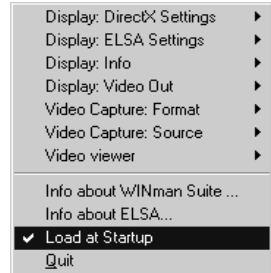


Some VCRs and TV sets provide only a SCART connector for video input. To connect the GLoria Synergy to the device you will need a SCART-to-S-Video/composite adapter which should be switchable between video-in and video-out. Your local TV/video dealer should be able to provide you with a suitable adapter.

ELSA Video Settings

If you have installed the ELSA drivers and tools (see page 7) an ELSA icon  will appear in the task bar at the bottom right of your screen. A click on this icon opens up a dialog box from which you can call up the commands for the video settings. The video input for the *GLoria Synergy* can be defined and adjusted using the ELSA video settings. You can set the following options:

- The signal source ('Video Capture: Source')
- The video display ('Video Capture: Source')
- The resolution of the video recording ('Video Capture: Format')
- The video display ('Display: Video Out')
- A preview window for the signal at the video input ('Video Viewer')



If you have connected a video input device to the *GLoria Synergy*, you will need to change your settings under 'Video capture: Format' and 'Video capture: Source'.

Video Display on the Monitor



It may be enticing to record video material, but... We must remind you that copyright-protected material must not be copied or duplicated without permission. ELSA accepts no responsibility for copyright violations!

You can connect any normal video camera or any video device to the graphics board. Connect the video output on the device to the suitable socket in the composite video adapter cable. There is no risk of confusing the input sockets because of the different shapes of the composite video and S-Video plugs.



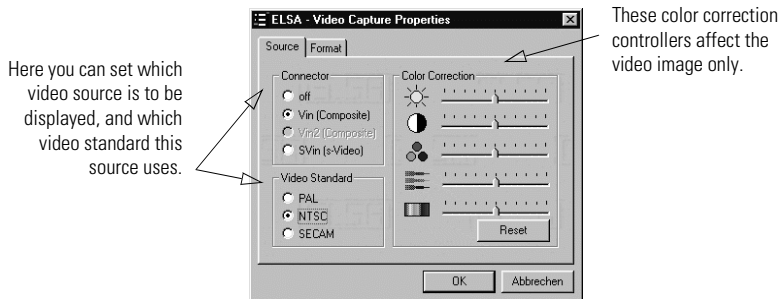
Make sure that you do not mix up the input and output sockets on the composite video adapter cable when connecting the video camera.

The video input on the *GLoria Synergy* is compatible with "Video for Windows". Thus any application that supports this standards should work.

Once you have connected the video source, started your computer and loaded Windows, click on the ELSA symbol in the task bar in the bottom right of the screen and select the **Video capture: Format ▶ Start** command from the dialog box.

Video capture: Source

You now need to specify which video source you wish to choose on the 'ELSA - Video Recording Properties' tab. The color correction setting options allow you to adapt the input signal. This covers brightness, contrast, color, image sharpness and hue. The setting for the hue, however, is only effective for NTSC input signals.

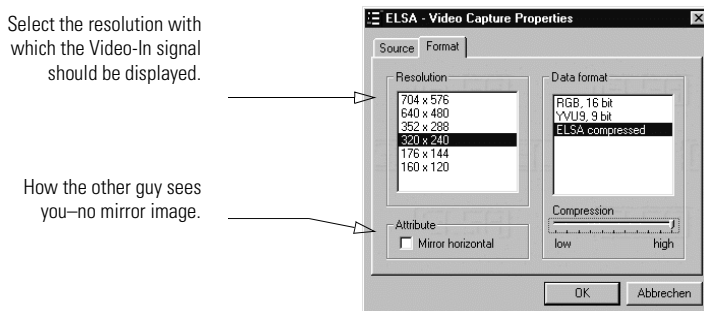


Select **PAL**, **NTSC** or **SECAM** as your video standard. PAL is the normal video standard in Europe. The manual for your video recorder or video camera can help if you have any queries.

Select which video input you wish to be active from the Connection option group. For example, you can connect a video recorder to each of the two composite inputs (In2 video and In3 video) and a video camera to the S-VHS input (In1 S-Video). Clicking on the relevant input determines which video source sends your signal to the *GLoria Synergy*.

Video capture: Format

Clicking on the 'Format' tab brings up a selection of possible video resolutions. Select the resolution you require for video display and recording and confirm your settings by clicking **OK**.



It is worth considering the data format for video recordings. The *ELSA Codec* for video data compression features a highly effective reduction procedure which saves disk space and, depending on your computer system, can work in real time.

Recording video involves very large amounts of data. The following tips will help you to record without frame dropping.

- Close other programs, especially DOS boxes, while recording videos.
- Stop any simultaneous video output.
- Carry out a hard-disk optimization before recording.
- Use a separate hard disk for recording.
- Use the ELSA video compression if you have a Pentium 166 processor, or better.
- Deactivate the audio recording if not required.

AVI files recorded with the ELSA compression require a codec installed in the system for playback. Thus you should follow two steps when recording:

First record the video with the ELSA compression to benefit from the advantages outlined above.

Then use 'MainActor' (see page 24) to convert the file into a more common format such as MPEG, Indeo or Cinepak. You could also use any video editing program which supports the "Video for Windows" codec.

If you want to playback video recorded with the ELSA compression, best results are achieved with the Windows Media Player using RealColor or TrueColor modes. A color depth with just 8 bits/pixel (256 colors) can result in poor image quality with coarse color transitions (see 'Color Palettes, TrueColor and Gray Scales' on page 34).

For a detailed description of the various data formats refer to see 'Video Formats: Compressors At Work' on page 37.

How Does the Video Image Get Onto the Computer Monitor?

The *WINNERware* CD has programs you can use to display the video image. One particularly exciting application when the video camera is connected is to use Microsoft Net-Meeting (see page 23). You can set up conferences using video information via a TCP/IP network (e.g. the Internet) or via a telephone line using a modem. For example, you can show on the screen the video image of the participants in a conference. Entire video sequences can be recorded with MainActor, another program on the *WINNERware* CD. Special formats allow linking of animated video sequences to Internet pages (see page 24).

Video can also be viewed with the Video Viewer. Start this from the *ELSA WINman Suite* icon in the task bar.

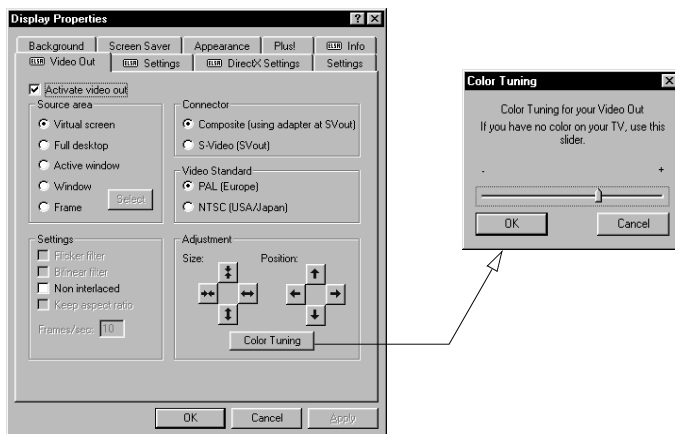
The Computer Display on TV/Video

What you see on your computer monitor can also be displayed on video, TV, or via a video beamer. The entire screen, or even just a part of it; the active window of any application, for example.

- ① Click on the ELSA symbol in the task bar and use

Display: Video Out

to call the dialog for the **ELSA** Video Out.



- ② Next, check if the video output is active.
- ③ Now check the video standard. Depending on the standard you require, activate either PAL or NTSC.
- ④ Under 'Connector', select the video input type, be it composite or S-Video.

Should a black and white image appear on your TV, call the **ELSA** Video Out dialog and click on **Color Tuning**. In the Color Tuning window, move the slider left or right to adjust the color-carrier frequency until a colorful and stable picture is seen on your TV.

By now, you should see your monitor display on the video device. In the 'Source area' field you will see several options for the deciding which part of the image should be displayed. Under 'Settings' and 'Adjustment' you can further optimize the quality, size and position of the on-screen image.

Video-In under OS/2

The Video-In features of the *GLoria Synergy* are available to you under OS/2 Warp 4. This is, however, not true when using multi-screen operation. As well as the drivers for the Video-In function, you should also install the MainCodec as supplied by ELSA. The MainCodec “translates” Windows-typical video into formats understood by OS/2. This applies not only to the input format, but also to the output formats.

Installation

Before installing the driver, check that the installation of your OS/2 included the multi-media setup.

- ① In the 'System Setup' call 'Install/Remove' and select 'Multimedia Application Install'. You will find the driver files in the following directories:
 - Video driver: \GLORIA\SYNERGY\OS2\GRADD\VIDEOIN
 - MainCodec: \ELSAWARE\MAINACT\OS2\CODEC
- ② Confirm the subsequent questions including the changes to the system files, and then restart your computer.

After restarting your computer, the Multimedia Setup of OS/2 now contains a new registry card, 'P2 VideoIn'. This card provides various functions for processing and controlling the video input signals. Make sure you check the settings for Input Connector and Camera under 'Default Adjustments'.

Check the settings for Input Connector and Camera format

Activate the video preview with the **Monitor** button



Use the F1 key or the **Help** button to open the online help, which will give you further information about individual topics.

Programs for Recording Video

Two programs for recording and playing back video are already featured in OS/2 Multimedia Setup. These programs, 'VideoINRecorder' and 'Digital Video', are located in the Multimedia folder. Further information and a detailed description of the functions these programs offer can be found in your OS/2 manual.

Apart from these standard programs, you can install the program MainActor/2 (see page 1) which can be installed from the *WINNERware*-CD. To install MainActor, access the \ELSAWARE\MAINACT\OS2 directory and call the **INSTALL.CMD** file.

Useful Stuff and More

Apart from the ELSA drivers, the *WINNERware* CD also contains additional programs and utilities for use with the *GLoria Synergy*, a selection of which we will introduce here. Information about other programs can be taken from the README files on the CD (see "Software Installation from the CD" on page 1).

- Win 95
- Win NT
- OS/2

Neat, Meetings!

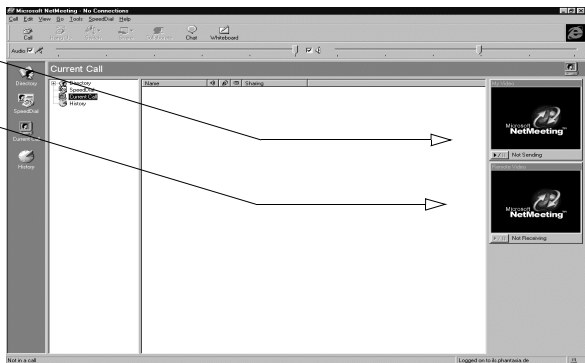
You will find Microsoft's NetMeeting conferencing program on the *WINNERware* CD. This program offers users a completely new way of communicating via the Internet or within networks. The following list is a short summary.

With NetMeeting you can, for instance:

- Call up anyone over a network or through a modem
- Carry on conversations over the Internet
- See the people you call up using a modem or network
- Work in one application with others (application sharing)
- Use the whiteboard to draw during an online conference
- Send written messages in chat mode
- Set up a call link, so that others can call you from your webpages
- Send files to all the participants in a conference

Your picture could be shown in video here...

...and the remote site here.



You can connect a video camera to the video input of the *GLoria Synergy*. The picture can be shown in a Microsoft NetMeeting conference.

The F1 key or the ? menu command calls up NetMeeting's online help. You will find more information about the program here.



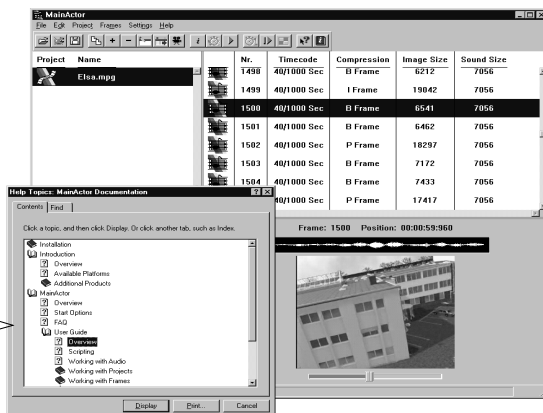
Win 95
Win NT
OS/2

MainActor—The Principal Performer

In What Role?

That is for you to decide! You will find MainActor on the CD. MainActor is a multimedia package that allows you to load, edit, and playback any animations, images and sounds; you can also convert these to a wide variety of formats. Edited projects may be stored as new animations or images.

It is easy to start using MainActor, thanks to its comprehensive online help.



MainView is the external player for MainActor. It is used if you only wish to playback videos, without having to load them into MainActor. MainView can also be called from other programs.

MainActor has Style

The table below lists all the formats for the loading and saving modules of the program package currently available:

Loading modules			Saving modules	
AVI	GIF-Anim	MPEG	AVI	MPEG-I/II
BMP	IFF	MPEG-Audio	BMP	MPEG-Audio
DL	IFF-Anim3/5/7/8/	PCX	FLC/FLI	Video Data
FLC/FLI	JPEG	Quicktime	GIF / GIF-Anim	Quicktime
GIF		WAV	JPEG	WAV
			MPEG-I	



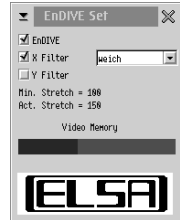
Open MainActor's online help by pressing F1 or selecting Help from the menu bar. You will find more information about the program here.

ELSA TOOLS

- Win 95
- Win NT
- OS/2

ELSA EnDIVE Set

With the ELSA utility *EnDIVE Set* for OS/2 Warp 4 you can select or deselect the EnDIVE support, which is an x/y filter for improving the quality of enlarged or reduced video playback. You can also observe how the offscreen video memory is being used. This function is only active during video playback or when another program using *EnDIVE* is active.



The video window should be no smaller than the size indicated by 'Min. Stretch' for the x/y filter to work. The values under 'Act. Stretch' are the actual dimensions of the current video window.

- Win 95
- Win NT
- OS/2

ELSA DESKman

This program is used in dual-screen mode (PCI version only) to set on which screen the message boxes, maximized windows and full-screen command lines appear. You can select the right-hand or left-hand screen, or the current mouse position. The settings are immediately effective. If the Advanced Power Management BIOS is active, you can additionally use the *ELSA DESKman* to switch the driver support of the APM on or off. Changes here are only effective after restarting the computer.



The dual-screen drivers are on the *WINNERware* CD in the directory: \GLORIA\SYNERGY\OS2\DUALSCR\

The Video-In function is not available with dual-screen operation.



ELSA POWERdraft for AutoCAD

ELSA POWERdraft is one of the most powerful productivity enhancement tools for AutoCAD R13 for Windows and AutoCAD LT 3 for Windows 95.

ELSA POWERdraft for AutoCAD supports the following environments:

- AutoCAD R13 under Windows NT 4.0
- AutoCAD R13c4 (and later) under Windows 95
- AutoCAD LT 3 for Windows 95 and Windows NT 4.0



Take careful note of the current entries in the CD-Setup window. It is possible that your version already includes a driver for AutoCAD R14. The latest drivers can also be downloaded from the ELSA Internet web site (see page 41).

Seamlessly integrated into the AutoCAD environment, your POWERdraft driver offers significant improvements over existing driver technology. POWERdraft is an extremely fast and reliable driver platform for AutoCAD. Proven 32-bit display list technology and an intimate knowledge of your ELSA graphics adapter combine to provide an excellent solution for the most demanding AutoCAD users.

Additionally, your POWERdraft driver includes the powerful utilities, *SuperView*, *MagniView*, *MultiView* and *Cockpit*, each designed to accent the AutoCAD drafting environment without inhibiting it. Fully dynamic and integrated through ELSA's SmartFocus technology, each utility is fully transparent to AutoCAD and available during any AutoCAD command.

SmartFocus

ELSA's SmartFocus technology, which is used in all POWERdraft windows, keeps you from having to switch the focus between driver windows and the AutoCAD windows. After using a function in one of the driver windows, any keyboard entry or crosshair movement automatically makes AutoCAD the active window again. You don't have to expressly click in a window to activate it, as is in the case with other drivers.

Installation

The CDSETUP.EXE program is found in the root directory of your WINNERware CD. Start this program, and continue as described below from step ④. Otherwise, or in the case of difficulty, please do the following:

- ① Start Windows.
- ② Select **File ► Run...** in the Program Manager.

- ③ Insert the *WINNERware* CD, change with **Browse...** to the directory for your graphics board (e.g. \GLORIA\XLSYNERGY\ACAD\R13WIN for the *ELSA GLoria Synergy*ELSA GLoria-XL) and start SETUP.EXE from there.
- ④ Confirm with **OK** and follow the instructions.
- ⑤ Select the language to be used in the installation dialogs.

SETUP finds your AutoCAD by reading the association for the file extension DWG.

You will have to modify the path accordingly if you wish to set up *POWERdraft* for a different AutoCAD installation. AutoCAD LT 3 for Windows 95 are detected automatically.

■ AutoCAD R13 for Windows

You should install the driver to a dedicated directory. The variable ACADDRV will be assigned to this directory automatically. Remember to select the driver in the AutoCAD configuration dialog. Select the 'Config/Screen configuration' command in AutoCAD.



*We recommend that you do **not** specify the AutoCAD directory as the target directory, as you would then be unable to install future versions in a separate directory.*

■ AutoCAD LT 3 for Windows

The driver will be installed in the AutoCAD LT 3 directory. An existing driver will be renamed.

The driver is based on the *POWERlib*, a driver-independent, fast graphics library. Since this library can also be used by other drivers or applications, it may already be installed on your system. If the existing *POWERlib* library is not compatible with the driver, SETUP lets you choose whether to abort or to continue the installation. If you decide to continue, SETUP will inform you which other application(s) will no longer work due to the incompatibility.



*After SETUP has finished you will find a new icon in your AutoCAD program group. Double click on the icon to see online help for the *POWERdraft* for AutoCAD driver. This help file includes documentation changes made after printing and a new version report, documenting changes from earlier versions, if applicable.*

ELSAview 3D

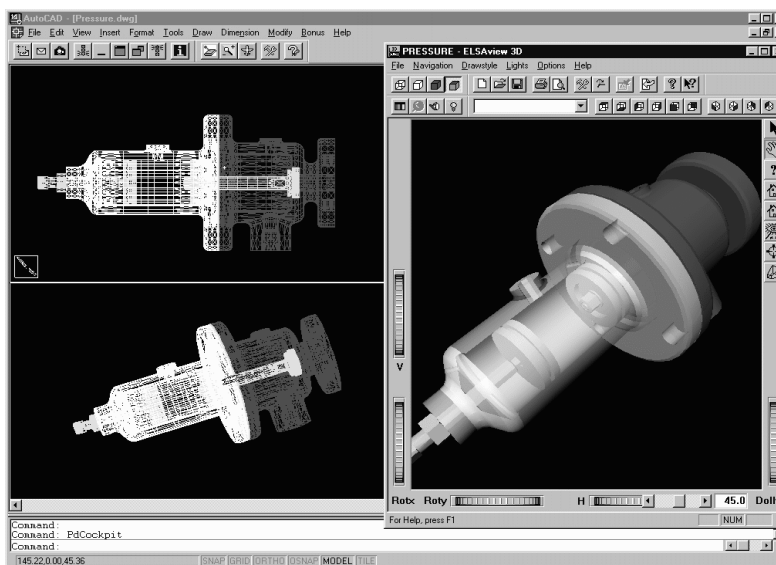
ELSAview 3D is a 3D viewer that can be run either as a standalone program or in conjunction with AutoCAD.

What Does *ELSAview 3D* Offer ?

Checking objects in 3D is a time-consuming business when designing 3D objects in the AutoCAD desktop. Every view must be rendered and will switch straight back to wire-

frame representation if the object is moved. *ELSAview 3D* is fully integrated in AutoCAD and allows constant monitoring of drawn objects in three-dimensional space. You can move the object on all three axes. In addition, you can use different light sources with different colors to illuminate the object. You can achieve a very plastic representation of the object through perspective correction and the ability to add 3D filters. The accuracy of the representation can be further enhanced depending on the resolution selected, the drawing size and the scale of the drawing.

Operation of *ELSAview 3D* makes a significant contribution to user friendliness. The most important control functions are found on a toolbar. You can move the object freely through space in real time using the mouse. The new position is automatically translated to the AutoCAD desktop.



Installation

The *ELSAview 3D* installation program may be found on the *WINNERware* CD. Insert the CD in your CD-ROM drive.

- ① Run SETUP.EXE from the directory for your graphics board (e.g. CD drive letter'\GLORIA\SYNERGYXL\ACAD\PV3D\DISK1 for the *GLoria SynergyGLoria-XL*)
- ② You will be prompted to specify the AutoCAD installation directory in the next dialog box. The first AutoCAD directory is always offered as a default value. You may confirm this or select a different directory with Browse.

- ③ Enter the installation directory for the *ELSAview 3D* program files in the next dialog box.
- ④ The following dialog box allows you to specify whether the AutoCAD-ARX files should be updated only in the directory currently specified, on all local drives or over the entire network.

Once you have installed *ELSAview 3D* successfully, you will be able to start AutoCAD directly and work with *ELSAview 3D*.



Press F1 to call up the online help. The online help has context-related information on the various topics.

ELSA Driver for 3D Studio MAX/VIZ

ELSA offers a special driver for the 3D Studio MAX up to version 1.2 and 3D Studio VIZ. The development of this driver has been based on the Heidi driver from 3DLabs, which takes full advantage of the graphics chip's capabilities. The optimization of the ELSA driver lets you reach higher display speeds and thus is indispensable for the *GLoria Synergy*.

- ① Ensure that 3D Studio MAX/VIZ has not been started.
- ② Insert the *WINNERware* CD into the CD-ROM drive and start the **SETUP.EXE** program from the directory for your graphics board (e.g. \GLORIA\SYNERGY\3DSMAX for the *GLoria Synergy*).

The program guides you through each step of the installation. Read the instructions carefully, and answer and confirm each of the questions.



Further information on this special driver can be found in the README.TXT file in the directory for your graphics board on the WINNERware CD (e.g. \GLORIA\SYNERGY\3DSMAX for the GLoria Synergy).

Technical Data

ELSA Graphics Board Addresses

The ELSA graphics boards are 100% IBM VGA compatible and occupy memory and several I/O addresses accordingly. To ensure the proper functioning of your system, it is essential to make sure that the I/O and memory addresses occupied by the graphics board are not used by other hardware components

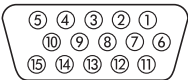
This affects the following addresses:

I/O Addresses	Standard VGA I/O	3B0 – 3DF
Memory Addresses	Video RAM	A0000 – BFFFF
	Video BIOS-ROM	C0000 – C7FFF

Higher memory ranges (above 1 MB) will be allocated via the PCI BIOS interface. If you come across any address conflicts, try to modify the I/O address of the expansion board causing the conflict. The addresses of the ELSA graphics boards cannot be changed.

The VGA D Socket

Pin Assignment



Connection	Signal	Connection	Signal
1	Red	9	+5 V
2	Green	10	Sync ground
3	Blue	11	Ground
4	Ground	12	Bidirectional data (SDA, DDC1/2B)
5	DDC ground	13	Horizontal synchronization
6	Red ground	14	Vertical synchronization
7	Green ground	15	Data timing (SCL, DDC2B)
8	Blue ground		

The *GLoria Synergy* issues analog signals in accordance with the requirements of Guide-line RS-170. The synchronization information is sent separately. If your monitor provides a switch for the input impedance, you should select '75 Ohms' (= '75 Ω ') for the R, G and B video inputs and '2 kOhm' (= '2 k Ω ') for the sync inputs. You should only try other switch settings at the sync inputs if your monitor expects sync levels other than those used by normal monitors and does not produce a stable display. The switches are labeled "Low" and "High" only on some monitors. You can then refer to your monitor manual to

find out what input impedance level this refers to, or you can experiment to find a position in which a stable image appears in all graphics modes.

The S-Video Connector



Pin Assignment

Pin	Signal	Pin	Signal
1	GND, ground (Y)	2	GND, ground (C)
3	Y, intensity (luminance)	4	C, color (chrominance)

The VMI Bus

The VMI bus is a new interface standard defined by the VESA (Video Electronic Standards Association). This interface allows the following modules to be connected to the graphics board:

- MPEG (DVD drives)
- Video-phone
- TV tuner
- Digitizer

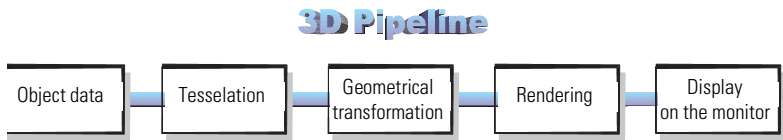
The VMI bus provides a direct, digital connection between the plug-on module and the graphics board.

All About Graphics

3D Graphics Representation

The 3D Pipeline

What actually happens when a monitor displays a 3D object? The data describing the 3D object are passed through what is known as the 3D pipeline, in which the mathematical calculations for its representation in space and perspective on the monitor are carried out. What happens in detail?



Start: The object data

The pipeline starts at the object. The object description is made up of the data (points).

Tessellation

In the first step, the object is broken down into a number of polygons or triangles. The vertices of the triangles are described by coordinate points (x, y and z) with the 'z' value containing the depth information. Depending on the representation, these vertices also contain information concerning the material and texture. The volume of data to be processed increases enormously because of this conversion of the image information.

Geometrical transformation

This part of the 3D pipeline is very processor-intensive, as all the calculations for the 3D scene are carried out at this stage. Simplified, it comprises of the following steps:

- **Illumination** – The illumination of the scene by different light sources is calculated.
- **Transformation** – In transformation, the objects are aligned in perspective as seen from the observer's point of view.
- **Back face culling** – This process computes hidden surfaces resulting from the observation perspective chosen. Any object having an invisible front surface is omitted.
- **3D clipping** – In this process, each polygon is checked to determine whether it is partially or fully invisible. The invisible faces or parts of objects will be removed.
- **Scaling on the screen** – The above steps are now calculated for three-dimensional space using normalized coordinates. The on-screen image coordinates will only now be computed.

Rendering

At this stage, the 3D scene is filled with color shades and textures are applied. Different processes and methods are also applied here.

- **Texture mapping** – At this stage, the 3D object undergoes a sort of "face lift". The materials and textures are assigned. Different methods are used here to make the textures appear realistic, even when enlarged or reduced. As a first step, the textures are computed:
 - Point sampling is the simplest method. A pixel-by-pixel comparison is made between the texture template and the surface to be filled. This method leads to a very coarse representation, especially when enlarged.
 - In linear mapping, a new color value is interpolated from the adjacent pixels (or texels) of a texture. This gives better results than point sampling, as the hard boundary between the coarse pixels is blurred.
 - The MIP mapping method stores a large number of enlargement stages for the texture. The depth information of a primitive is then used to determine which enlargement stages of the texture will be used in drawing. Normal textures seldom contain more than 256 colors.

The first 15 bits of a 16-bit wide color representation are reserved for the colors (5/5/5 > R/G/B). Information concerning the transparency of the texture is carried in the alpha channel. The last bit is reserved for this information. Finally, a distinction is made in MIP mapping between bilinear and trilinear filtering. Bilinear filtering interpolates between two pixels of two textures, trilinear filtering interpolates between four pixels for each of two textures.
 - Bump mapping introduces a new dimension. Relief or raised textures can only be generated with the other methods in two dimensions using light and shadow effects. In bump mapping, the texture is additionally assigned height information, which allows very realistic three-dimensional effects to be created.

The staircase effect is corrected by anti-aliasing. This is either done by interpolating mixed pixels, in which a new color value is computed from two adjacent color values, or by using transparent pixels of the same color which are overlaid over adjacent pixels.

■ **Shading** – Shading takes account of the effects created by different light sources on the 3D object and provide for a very realistic overall impression. Here, too, there are different methods which are more or less processor-intensive:

- Flat shading assigns a color value to each polygon. This results in a mosaic-like, jagged representation, which demands only a short processing time.
- In Gouraud shading, all the vertices of the polygons are assigned a color value. The remaining pixel information for the polygon is interpolated. This method gives a very gentle color transition, even with fewer polygons than are required for flat shading.
- The Phong shading method additionally takes a normal vector of reflectivity into consideration when interpolating. An even more realistic impression is generated by the representation of reflections and mirror images.
- Certain applications use ray tracing methods. This is a very computer-intensive and time-consuming process in which each individual pixel and its reflection in 3D space is calculated.

■ **The frame buffer**

The finished image will not be written to the frame buffer until this complex sequence of steps is completed. The frame buffer is made up of front and back buffer. The back buffer acts as a buffer page, in which the next image to be displayed is built up. This prevents the process of image drawing being visible. The duplicate storage method is also known as double buffering.

Flipping: Display on the monitor

The content of the front buffer is displayed on the monitor. When the drawing process in the back buffer is completed, this image is then passed to the front buffer in a process known as flipping.

The next image will only ever be displayed once the image drawing process in the back buffer is completed. This procedure should be repeated at least 20 times a second to give a smooth representation of 3D scenarios. In this context, we speak of frames per second (fops), a very important value for 3D applications. A cinema film runs at 24 fps.

3D Interfaces

Software interfaces, including 3D interfaces, are known as APIs (Application Program Interface). The question is what are these interfaces used for, and how do they work.

In simple terms: They make developers' work easier. The methods by which the various interfaces function, are comparable: In the past it was necessary to address the various hardware components directly in programming if you wanted to exploit their capabilities to the full. The APIs are a kind of translator operating between the hardware and the software.

The specification of standard definitions was the precondition for the proper function of these translation routines. These definitions are implemented by the hardware manufacturers during development and optimized for the hardware concerned. Developers can implement complex procedures relatively easily by using these definitions. They can use a uniform command set when programming and do not need to know the characteristics specific to the hardware.

What APIs Are Available?

There are a good dozen more or less commonly found 3D APIs. However, in recent years, three formats have established themselves as the favorites: Direct 3D, OpenGL and HEIDI. ELSA graphics boards support these commonly found 3D interfaces. The functional differences between the interfaces are slight, as is shown by the table below. The decisive questions for the user concern extensibility, flexibility and possible portability to existing applications.

Function	Direct 3D	OpenGL	Heidi*
Alpha blending	■	■	■
Texture mapping	■	■	■
MIP mapping (not for <ProName1>)	■	■	■
Video motion mapping	■	□	■
Fogging	■	■	■
Anti-aliasing filter	■	■	■
Flat shading	■	■	■
Gouraud shading	■	■	■
Phong shading	□	□	□
Stencil buffer	□	■	□

Direct 3D

As a development of Mode X and DirectDraw under Windows 3.1x, Direct 3D is a branch of the DirectX multimedia family which was developed directly for Windows 95 to accelerate the slow 3D display characteristics of the operating system. Direct 3D is based on Microsoft's Common Object Model (COM), which is also used as the foundation to OLE technology (Object Linking and Embedding). Direct 3D cooperates with Direct Draw in

two-dimensional display. A typical situation would be, for instance, rendering a 3D object while Direct Draw is placing a two-dimensional background bitmap. Microsoft claims to have corrected some of the weaknesses of the old version in the most recent version 5.0.

Immediate Mode and Retained Mode

As can be assumed from the two terms, immediate mode is a programming mode that is close to the hardware. Retained mode, on the other hand, is a programming mode that is largely predefined through an API interface. What does this mean in detail? Looking at the two systems hierarchically, the immediate mode is also known as the low-level mode. The programming interface level is close to the hardware level and permits the programmer direct access to special functions in the hardware component concerned. The retained mode (high-level mode) makes it possible, for example, to load a defined 3D object with textures into a Windows application. Here it can be manipulated and moved using simple API commands. Translation takes place in real time, without the need to know the technical structure of the object.

For further information see the Internet WWW site <http://www.microsoft.com>

Heidi

Heidi is a purely immediate mode interface and does not operate with a display list. This makes it particularly suitable for application developers who already have access to graphics libraries. Well-known CAD programs such as 3D Studio MAX/VIZ, Whip by AutoCAD 13 and Mechanical Desktop use the Heidi system. In contrast to OpenGL, Heidi is an object-oriented interface and thus simplifies function calls. Hardware acceleration is achieved through standard interfaces or by means of direct hardware access to special 3D chips. Optimum performance can be achieved in this way. This API is extremely versatile and flexible thanks to the many plug-ins that are available in addition to the definitions Heidi supports internally.

For further information see the Internet WWW site <http://www.ktx.com>

OpenGL

Following its success in gaining a good reputation amongst professionals using CAD/CAM programs, OpenGL is now increasingly penetrating the PC market. OpenGL is platform-independent and makes a distinction between immediate and display list modes. A display list stores specific sequences that can be recalled again later. The object descriptions can then be taken directly from the list, resulting in very high performance. However, if objects need to be manipulated frequently, the display list will have to be generated again from new. In this case, the speed advantage is lost. OpenGL provides a wide range of graphics features, from rendering a simple geometric point, line, or filled polygon, to the most sophisticated representations of curved surfaces with lighting and



texture mapping. The some 330 routines of OpenGL provide software developers access to these graphics capabilities:

For further information see the Internet WWW site <http://www.sgi.com>

Color Palettes, TrueColor and Gray Scales

Common graphics modes are listed in the following table. Not all graphics modes are available on the <ProName> boards.

Graphics mode	bpp	bpg	Colors (from palette)	Max. gray levels
VGA 0x12	4	6+6+6	16 of 262,144	16
VGA 0x13	8	6+6+6	256 of 262,144	64
Standard	8	6+6+6	256 of 262,144	64
	8	6+6+6	256 of 16.7 million	256
HighColor	15	5+5+5	32,768	32
	16	6+6+4	65,536	16
	16	5+6+5	65,536	32
TrueColor	24	8+8+8	16.7 million	256

(bpp = bits per pixel; bpg = bits per gun)

VGA

In VGA graphics adapters, the digital color information stored in the video memory (4 bits for 16 colors or 8 bits for 256 colors) is converted into a digital 18-bit value in the graphics adapter in a CLUT (ColorLookUpTable). The 3 x 6 bits are converted separately for R/G/B (red/green/blue) in the RAMDAC (D/A converter) and transferred to the monitor as analog signals on just three lines (plus sync lines). The original color values are converted into completely different values by means of a translation table. The value stored in the video memory is thus not a color value, but only a pointer to a table in which the actual color value is found. The advantage of this method: Only 8 bits need to be stored for each pixel, although the color values are 18 bits wide; the disadvantage: Only 256 colors can be displayed simultaneously from a palette of 262,144 possible colors.

DirectColor

The situation is different in the case of DirectColor (TrueColor, RealColor and HighColor). In this case, the value stored in the video memory is not translated but is passed directly to the D/A converter. This means that the full color information must be saved for each pixel. The meanings of the terms RealColor, TrueColor, and HighColor can be confused, as they are not always used unambiguously.

HighColor and RealColor

HighColor and RealColor usually describe a 15 or 16-bit wide graphics mode, while TrueColor should only be used for the more professional 24-bit mode (or 32-bit) mode.

15 bits provide 5 bits each for the red, green and blue values, resulting in 32 levels per RGB component and thus 32,768 (= 32 x 32 x 32) different color hues.

The 16-bit graphics modes are organized differently. Most common are (R-G-B) 5-6-5 (e.g. XGA) and 6-6-4 (e.g. i860). 5-6-5 means that 5 bits are used for each of red and blue and 6 bits are used for green. In the case of 6-6-4, 6 bits are used for red and green and 4 bits for blue. Both ways of assigning the bits correspond to the color sensitivity of the human eye: this is highest for green and lowest for blue. 65,536 different colors can be displayed.

TrueColor

The TrueColor mode is more complex, using 24 bits per pixel. Here, 8 bits are available for each color component (256 levels), resulting in 16.7 million different color hues. There are more colors available than pixels on the screen (1.3 million pixels at a resolution of 1280 x 1024).

VESA DDC (Display Data Channel)

VESA DDC refers to a serial data channel between the monitor and the graphics board. Required for this is that both components support DDC and that the monitor cable includes the additional DDC line. An extended monitor cable is used so that the can send data about its technical specification, such as the name, model, maximum horizontal frequency, timing definitions etc. or receive commands from the graphics board.

There are various standards; DDC1, DDC2B, and DDC2AB.

DDC1

Only the monitor can send data (unidirectional). A line in the monitor cable is used to send a continuous data stream from the monitor to the graphics board. In the case of a standard IBM VGA compatible 15-pin monitor connector, pin 12 (formerly used as monitor ID bit 1) is used for data transmission, and the Vertical Sync signal of pin 14 is used as transmission clock (VCLK). An EDID data set (Extended Display Identification) of 128 bytes is sent repeatedly, from which the major monitor data can be read in the computer. The computer can then read the most important data, e.g. the monitor size, the extent of DPMS support and a list of the most important VESA monitor timings supported, and some freely definable monitor timings.

DDC2B

The data channel is based on the I2C bus type with the access bus protocol and can be operated in both directions (bidirectionally between monitor and board). In the case of a standard IBM VGA compatible 15-pin monitor connector, pin 12 (formerly used as monitor ID bit 1) is used for data transmission (SDA), and the pin 15 (formerly used as monitor ID bit 3) is used as transmission clock (SCL). The graphics board can request the short EDID information (see DDC1) as well as the more comprehensive VDI information (VESA Display Identification File).

DDC2AB

With DDC2AB additionally to DDC2B the computer may send commands for controlling the monitor, e.g. for adjusting the screen position or the brightness (similar to ACCESS bus).

Video Signal Formats

There are two common standards for the transmission of video signals: Composite video and S video. The IEEE 1394 format is currently supported only by Sony equipment.

The monitor and graphics board communicate on three color channels. The color information is split into three color signals for red, green and blue (RGB). Video information for a television, on the other hand, only makes a distinction between monochrome and color information (luminance and chrominance).

Composite Video

Composite video—also known as FBAS—packs the luminance and chrominance information in a single signal. In this way, all the information required for a video image can be transmitted over a single cable. This method is a great benefit for transmissions from a television transmitter. But this method also has clear disadvantages regarding signal quality: The nesting of luminance (Y) and chrominance (C) is imprecise and leads to errors in the video image.

S-VHS

The solution to the disadvantages of composite video format is clear. S-VHS or Y/C offers the answer: the separation of the Y and C signals. The cost of having the second cable necessary to implement this is more than compensated for by the enhanced image quality. Video cameras that use the Hi-8 or SVHS-C method separate the Y and the C signals while recording. When transferring the signal to a television or a video recorder, you should use the Hosiden connector or an S-VHS-compatible Scart cable, if possible.

IEEE 1394

This format—also known as FireWire—is a special case. It is the best solution in terms of quality, as it is a digital process. This development was a joint Apple and Sony initiative for transmitting digital video information. The video data are transmitted directly as they are produced, line by line. The throughput for IEEE 1394 is currently 100 Mbps. Transfer rates of 200 and 400 Mbps are already in sight.

Video Formats: Compressors At Work

Recording videos on your hard disk can quickly take up a great deal of its capacity. The amount of space required depends directly on the resolution and on the data format. The Video for Windows driver support the formats RGB16 and YVU9. Especially noteworthy is the video compression technique developed by ELSA.

RGB16

This data format works in RGB color space. 5 bits/pixel are required for each of the three color components red, green and blue, and another 1 bit/pixel is required for the filling. This means that a total of 16 bits/pixel, or 2 bytes/pixel, are required for storing one frame of video. The color resolution of RGB16 pictures is similar to RealColor under Windows. The advantage of RGB16 is that this format can be directly “understood” by Windows. The disadvantage is the large amount of storage space required. With a resolution of 320x240 pixels, a single picture takes up 150 kilobytes, and with a resolution of 640x480 pixels, four times the capacity, or 600 KB per image, is required.

YVU9

YVU9 requires less space with 9 bits/pixel. This format works in YVU color space and provides 256 gray shades per pixel in comparison with just 32 gray shades with RGB16. The compression of these files is achieved by reducing the color resolution. The human eye is more sensitive to differences in brightness than to differences in color, which means that the compressed YVU images are, qualitatively, no different to those which are not compressed. A YVU9 picture at 320x240 resolution takes up about 84 KB. A YVU9 picture with a resolution of 640x480 pixels requires four times the capacity, or 336 KB per image.

When processing YVU9 video you should use the 'MainActor' program. Other video processing programs frequently do not support this format.

ELSA Compression

The ELSA video compression technique reduces the data quantity even further. A special process stores just 3 to 5 bits per pixel. Like YVU9, the ELSA video compression works



in YVU color space. The compression rate depends on the type of images being compressed. Images clean of interference can be better compressed than noisy ones. Large unchanging areas, uniform brightness and low color variation also enable a better compressed than with complex images. A frame with 320x240 pixels compressed with the ELSA technique takes up about 48 KB. A frame with 640x480 pixels generally reaches a higher rate of compression than with 320x240 pixels, and takes up approximately 120 KB.

Your computer carries out the ELSA video compression in real time while you record the video. Utilizing the ELSA compression presents you with several advantages:

- you can record videos at a higher frame rate,
- you can record videos in higher resolutions,
- the drop rate is lower, and
- you can record longer video sequences on hard disk than is possible without data compression.

Appendix

Frequently Asked Questions and Answers

Installation Problems with your ELSA Graphics Board



How can I know which PCI slot provides bus master capability?

According to the PCI specification, all PCI slots must be bus master capable. Nevertheless, some computers have PCI slots without bus master capability. You can consult the manual of your computer or check the slot settings with the SETUP program of your computer. You can also contact the dealer where you bought your computer. You could also simply try out several slots. Your computer and the ELSA graphics board cannot be damaged. If the SETUP configuration program of your computer allows you to control the bus master capability, enable it (set it to 'ON' or 'Enabled').



Can I use an ELSA graphics board with a fixed-frequency monitor?

In principle, it is possible to operate an ELSA graphics board with a fixed-frequency monitor. The monitor must accept separate H and V sync signals. However, only the compliant high resolution mode can be displayed. It is not possible to display the standard IBM VGA graphics modes (no DOS full screen). You will need an additional VGA monitor for this setting.

Problems with Windows 95



After installing the drivers, my Windows 95 only displays 16 colors. I also get the error message 'No ELSA driver active'.

The driver is not installed correctly. This can have a number of causes. In addition to the installation notes in the 'README.TXT' file of the ELSA graphics driver, please check the following potential problems:

- No interrupt (IRQ) was assigned to the *GLoria Synergy*. To function correctly, the *GLoria Synergy* must have an interrupt. This must be assigned in the BIOS of the mainboard. This can be checked in the Device Manager under **Settings ► Control Panel ► System**. Click on 'Computer', then on 'Properties'. This window must contain the interrupt assignment of the graphics board—the interrupt must be reserved exclusively for the graphics board. If this is not the case, check the documentation

of your mainboard for information on assigning an interrupt to the graphics board. An update of the mainboard BIOS may also be necessary.

- Computer type: The *GLoria Synergy* is designed for computers with Pentium or Pentium-compatible processors. It is not suitable for computer systems based on i486 or compatible processors.
- Old drivers and tools are still installed or the installation was not reset to VGA: Uninstall all of the tools and drivers for your old graphics board before removing it (e.g. under **Settings ► Control Panel ► Add/Remove Programs**). Next, install the 'Standard VGA Driver' or 'PCI-Compatible Graphics Board'.
- Mainboards with new chipsets: Newer mainboards (e.g. Intel TX) often come with a diskette or CD with a patch for Windows 95. This patch must be installed to ensure that all hardware components, such as other PCI devices or special mainboard system components are correctly recognized. The failure to install this patch can lead to massive difficulties with the installation.
- DirectX 5 is not installed: The DirectX 5 software interface must be added to Windows 95 to ensure that all applications can interact closely with the hardware of the graphics board. This can be accomplished by running DXSETUP.EXE, which you can find under \ELSAWARE\DIRECTX5\DIRECTX\ on your *WINNERware* CD. DirectX 5 must be on your system before installing the graphics drivers.



Why can't I select higher resolutions and refresh rates in the ELSA settings, even though these are supported by my monitor?

Please ensure that your monitor has been entered in both the ELSA and Windows 95 settings. Both settings are absolutely necessary, as the resolutions and refresh rates may be restricted otherwise.



The video playback resolution is sometimes good and sometimes not so good

There are some special combinations of Windows graphics mode, video resolution and video window size in which you will get reduced video resolution. In such cases you should try the following: avoid windows overlapping the video window, increase the size of the video window, or reduce the refresh rate of the Windows graphics mode.



When Windows 95 takes too long to boot

ELSA graphics boards and ELSA Windows drivers support DDC for automatic monitor recognition. Windows 95 checks the monitor on every start. You may shorten the boot time by disabling the DDC check if your monitor does not support DDC. In *WINman Suite*, call 'ELSA Info' and switch the monitor detection off.

**How can I switch back to the ELSA Windows driver after using the VGA driver?**

If you had already installed the ELSA Windows driver before using the other driver, you will not have to repeat the installation procedure. The various steps are listed in the Installation Guide.

**Where do I find information about the various versions of the Windows drivers?**

You will find the latest release notes in the README file on the ELSA CD in the driver directory.

Video Function Problems**Video-In: The video preview window for my application is black**

Check which video input connector your video source device is connected to. Then check in 'Video Capture Properties' that the setting for 'Connector' is for the correct input.

General Questions and Answers**How many energy saving levels does the DPMS screen saver have? (not applicable to Windows NT)**

Most DPMS-capable monitors have a simple yet effective two-level power-saving circuit. The 10% power-saving level, which you can select on the ELSA screensaver, is thus skipped, and the monitor switches directly to the 80% power-saving level.

**How can I get updated software?**

The drivers are available for download to all ELSA customers: ELSA LocalWeb, through our Internet WWW site www.elsa.de, by direct FTP access [ftp ftp.elsa.de](ftp://ftp.elsa.de) or through the CompuServe Forum, enter GO ELSA (see 'Frequently Asked Questions and Answers' on page 39).

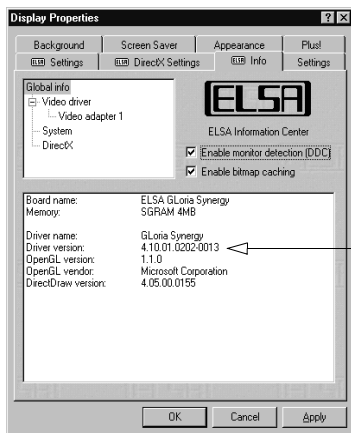
Advice and Help

If you encounter any problems during the installation or operation of your ELSA product, please consult this manual first. On the ELSA CD or floppy disk you will find a file called README.TXT, containing late-breaking changes and additional information not available when this manual was printed.

If you have further questions, you can contact our Support team. Ensure that you can provide the following information.

- Exact model name of your ELSA device.
- Version of the used ELSA driver or file date and time of the driver file.
- Operating system, hardware environment and bus system.

You can call up information about your system via the ELSA Info program. Click on **Start ► Settings ► Display** to open the Display Properties window. Click on the **ELSA** Info tab for a display of various information about your system.



Especially important:
The version number of your
graphics board driver

- Name and version of the application program with the error.
- A detailed error description. To be certain, try to reproduce the error at least three times and exactly describe the steps you took to deliberately trigger the error.

Who to Contact?

First you should contact the dealer where you bought your ELSA product. If there are still questions remaining, contact one of the following:

■ ELSA on the Internet

The ELSA Internet WWW site www.elsa.com

■ ELSA and CompuServe

The ELSA forum in CompuServe GO ELSA

■ ELSA Support Faxline

By fax to the ELSA support faxline +1-408-919-9120

■ ELSA by Mail

Or write to ELSA
 ELSA Inc.
 Computer Graphics Support
 2231 Calle De Luna
 Santa Clara, CA 95054
 USA

■ ELSA Support Hotline

If very urgent, call 0800-272-ELSA
 or from outside the USA:
 +1-408-919-9100
 Mondays to Fridays from: 7.30 am until 5.30 pm (PST)

■ ELSA World Wide

ELSA AG

Sonnenweg 11
 52070 Aachen
 Germany

Phone: +49-241-606-6132
 Fax: +49-241-606-6399
 ELSA LocalWeb dial- +49-241-938800
 up WWW User name: guest
 password: none

You can contact the ELSA subsidiaries:

ELSA Asia Inc.

7F-11, No. 188, Sec. 5
 Nanking East Road
 Taipei 105
 Taiwan
 R.O.C.

Phone: +886-22-7685730
 Fax: +886-22-7660873

ELSA Japan Inc.

Mita Suzuki Building 3F
 5-20-14 Shiba, Minato-ku
 Tokyo 108-0014
 Japan

Phone: +81-3-5765-7391
 Fax: +81-3-5765-7235

The ELSA LocalWeb

The ELSA LocalWeb provides direct access to ELSA's local Internet server, and contains the same information as the Internet web server www.elsa.com. Here you will find information about all ELSA products, the latest drivers, software and documentation, and you have the opportunity to put questions to our sales and support departments via the ELSA news server. To access the ELSA LocalWeb, you need a dialer program (e.g. the Dial-up Network in Windows 95) and an Internet browser.

To make a connection, first start the dialer software. Where information for the DNS server is requested, enter the IP address as 172.22.1.2. The user name is guest; no password is necessary. With a successful connection active, the browser software can be started.

Driver Updates

The latest versions of the ELSA drivers are always available for download from our Internet WWW site www.elsa.com or our LocalWeb and via direct FTP from [ftp.elsa.com](ftp://ftp.elsa.com). You will also find lots of information and answers to frequently asked questions (FAQs). You might also consider the newsgroups on our Webpages. Before you contact the ELSA Support team, please make sure that you are using the latest driver versions.

Repair?

If you are not sure whether your ELSA expansion board is defective or if the problem is just a driver which is incorrectly installed, please call the ELSA support hotline before you send the board for repair. Should you need to send in the ELSA expansion board to be repaired, please use suitable packing material and the original box to prevent damage during transport. In addition, please include a copy of the original purchase receipt as well!

You can help reduce the repair time by including a detailed description of the fault with the device, which will help us track down the error source.

DOC—Declaration of Conformity

ELSA AG GLoria Synergy-AGP



Tested To Comply
With FCC Standards
FOR HOME OR OFFICE USE

Compliance Information Statement

(Declaration of Conformity Procedure)

Responsible Party: ELSA Inc.

Address: 2231 Calle De Luna
Santa Clara, CA 95054
USA

Phone: +1-408-919-9100

Type of Equipment: Graphics Board

Model Name: GLoria Synergy-AGP

This device complies with Part 15 of the FCC rules.

Operation is subject to the following two conditions:

(1) this device may not cause harmful interference, and

(2) this device must accept any interference received, including interference that may cause undesired operation.

See user manual instructions if interference to radio reception is suspend.

*On behalf of the manufacturer / importer
this declaration is submitted by*

A handwritten signature in black ink, appearing to read 'Peter Padar'.

Aachen, April, 22th 1998

Peter Padar
Director Quality Management
ELSA AG, Germany



ELSA AG GLoria Synergy-4 NLX



Tested To Comply
With FCC Standards

FOR HOME OR OFFICE USE

Compliance Information Statement

(Declaration of Conformity Procedure)

Responsible Party: ELSA Inc.

Address: 2231 Calle De Luna
Santa Clara, CA 95054
USA

Phone: +1-408-919-9100

Type of Equipment: Graphics Board

Model Name: GLoria Synergy-4 NLX

This device complies with Part 15 of the FCC rules.

Operation is subject to the following two conditions:

- (1) this device may not cause harmful interference, and*
- (2) this device must accept any interference received, including interference that may cause undesired operation.*

See user manual instructions if interference to radio reception is suspend.

*On behalf of the manufacturer / importer
this declaration is submitted by*

A handwritten signature in black ink, appearing to read 'Peter Padar'.

Aachen, March 12th 1998

Peter Padar
Director Quality Management
ELSA AG, Germany



Warranty Conditions

ELSA'S SIX YEAR LIMITED WARRANTY

ELSA provides the following limited warranty to purchasers of ELSA products, EXCEPT ELSA CRT COLOR MONITORS, ELSA VIDEO CONFERENCING SYSTEMS AND ELSA TFT MONITORS, within the United States, and ELSA's warranty obligations are limited to the terms set forth below:

- a) ELSA AG and ELSA Inc. (jointly "ELSA") warrant this ELSA product and its parts (jointly "Product") against defects in material and workmanship for a period of SIX (6) YEARS from the date of delivery of the Product by an ELSA dealer to the purchaser.
- b) ELSA's entire liability and Customer's exclusive remedy will be, at ELSA's sole discretion, the repair, replacement, replacement by a successor product or refund of the original purchase price of the Product not meeting ELSA's limited warranty if the Product is returned within the warranty period with a copy of proof of purchase, such as the original purchase receipt, to ELSA or ELSA's dealer. ELSA will not be responsible for shipping or handling charges involved in shipping the Product to and from ELSA or ELSA's dealer, and purchaser must prepay all shipping charges.
- c) ELSA will not be responsible for replacing Product that is damaged by:
 - i) Accident, abuse, misapplication, mishandling, alteration, electrical current fluctuations, incompatible hardware or software, improper installation or operation, or improper packaging while the Product is in the possession of the purchaser,
 - ii) The purchaser's failure to follow operating, maintenance, storage, or environmental instructions as set forth in the Product manual and specifications.
- d) The warranty also does not apply if purchaser has submitted the Product for opening, modifications or repairs to persons other than ELSA or an authorized ELSA dealer.
- e) ANY IMPLIED WARRANTIES ON THE PRODUCT, INCLUDING THE IMPLIED WARRANTIES OF MERCHANTABILITY AND FITNESS FOR A PARTICULAR PURPOSE, ARE LIMITED IN DURATION TO THE EXPRESS LIMITED WARRANTY PERIOD OF SIX (6) YEARS AS SPECIFIED ABOVE.
- f) THE FOREGOING WARRANTIES ARE IN LIEU OF ALL OTHER WARRANTIES, EXPRESS OR IMPLIED, INCLUDING WITHOUT LIMITATION THE IMPLIED WARRANTIES OF MERCHANTABILITY AND FITNESS FOR A PARTICULAR PURPOSE. ELSA DOES NOT WARRANT THAT THE PRODUCT WILL MEET CUSTOMER'S REQUIREMENTS, OR THAT THE OPERATION OF THE PRODUCT WILL BE UNINTERRUPTED OR ERROR-FREE. FURTHERMORE, ELSA DOES NOT WARRANT OR MAKE ANY REPRESENTATIONS REGARDING THE USE OR THE RESULTS OF USE OF THE PRODUCT OR RELATED DOCUMENTATION IN TERMS OF THEIR CORRECTNESS, ACCURACY, RELIABILITY, OR OTHERWISE. NO ORAL OR WRITTEN COMMUNICATIONS BY ELSA OR ELSA'S AUTHORIZED DEALERS OR REPRESENTATIVES SHALL CREATE A WARRANTY OR IN ANY WAY INCREASE THE SCOPE OF THIS WARRANTY. (SOME STATES DO NOT ALLOW THE EXCLUSION OF IMPLIED WARRANTIES. THEREFORE THE ABOVE EXCLUSION MAY NOT APPLY TO YOU).
- g) NOTWITHSTANDING ANYTHING TO THE CONTRARY CONTAINED HEREIN, ELSA ENTITIES SHALL NOT, UNDER ANY CIRCUMSTANCES, BE LIABLE TO PURCHASER FOR CONSEQUENTIAL, INCIDENTAL, INDIRECT OR SPECIAL DAMAGES RESULTING FROM BREACH OF WARRANTY OR ANY OTHER LEGAL THEORY, INCLUDING BUT NOT LIMITED TO DAMAGES ARISING OUT OF OR CAUSED BY ANY MALFUNCTION, DELAY, LOSS OF DATA OR PROGRAMS, LOSS OF PROFIT, INTERRUPTION OF SERVICE, DAMAGE TO OR REPLACEMENT OF EQUIPMENT OR PROPERTY, OR LOSS OF BUSINESS OR ANTICIPATORY PROFITS, EVEN IF ELSA OR ELSA DEALERS OR AUTHORIZED REPRESENTATIVES HAVE BEEN APPRISED OF THE LIKELIHOOD OF SUCH DAMAGES OCCURRING. ELSA SHALL NOT BE RESPONSIBLE FOR DAMAGES IN EXCESS OF THE PURCHASE PRICE OF THE PRODUCT.

- h) THIS LIMITED WARRANTY SHALL NOT EXTEND TO ANYONE OTHER THAN THE ORIGINAL PURCHASER OF THE PRODUCT OR THE PERSON FOR WHOM IT WAS PURCHASED AS A GIFT, AND STATES THE EXCLUSIVE REMEDY HEREIN.

Glossary

- **3D** – Three-dimensional
- **3D clipping** – Process in geometric transformation in which invisible surfaces or parts of a 3D object are removed.
- **3D pipeline** – Sum of all steps required for the representation of virtual 3D scene on the monitor. These include →tessellation, →geometrical transformation and →rendering.
- **AGP** – stands for Accelerated Graphics Port and is a further development by INTEL based on the PCI bus. The AGP bus provides a greater bandwidth for data transmission and communicates directly with main memory. The bus is primarily intended for 3D graphics boards.
- **Aliasing** – the familiar "staircase effect". Jagged transitions are often formed between adjacent pixels in the representation of diagonals or curves. These "jaggies" can be smoothed out by anti-aliasing.
- **Alpha blending** – Additional information for each pixel for creating transparent materials.
- **Back buffer** – is the name for the image region built up in the background in the frame buffer during →double buffering.
- **Back face culling** – Method used to calculate the hidden faces of a 3D object.
- **BIOS** – Abbreviation of Basic Input/Output System. A program code in the read-only memory (ROM) of a computer which performs the self-test and several other functions during system startup.
- **Bump mapping** – Process by which textures are assigned depth information which allows the display of relief or raised structures.
- **Bus system** – A system of parallel data lines for the transfer of information between individual system components, especially to expansion boards (e.g. PCI bus).
- **Chrominance** – Color information in the video signal.
- **Clipping** – parts of polygons invisible to the representation are determined in clipping. These parts are then not displayed.
- **D/A converter** – Digital/Analog converter: A signal converter which converts a digital input signal to an analog output signal.
- **DCC** – (Digital Content Creation) DCC is the computer-based production of professional visualizations and animations for the field of digital media and the entertainment industry.
- **DDC** – stands for Display Data Channel. A special data channel through which a DDC-capable monitor can send its technical data to the graphics board.
- **DirectColor** – Generic term for TrueColor, RealColor and HighColor. The value that is stored in the video RAM is not translated but transferred directly to the D/A converter. This means that the full color information must be saved for each pixel.
- **Double buffering** – means that there are two display buffers. This means that the next image can be drawn in the page of the display buffer, which is initially invisible. This image will be displayed once it is ready and the next image will be prepared in the other page of the buffer. Animations and games can be made to look more realistic with this technique than with simple single buffer.

- **DPMS** – Abbreviation of VESA Display Power Management Signaling. This standard allows an energy-saving operation of monitors in several steps. The graphics boards described in this manual support VESA DPMS.
- **DRAM** – Abbreviation of Dynamic Random Access Memory. Volatile memory for read and write operations.
- **EDO-RAM** – Abbreviation for Extended Data Output Random Access Memory (Hyper Page Mode). EDO-RAM is very common on graphics boards, as the most recently used data persist in memory. A number of read accesses to similar data occur during the generation of an image, so that use of EDO-RAM gives a significant speed advantage.
- **FCC** – FCC compliance means that a device has been tested and found to comply with the limits for a Class B digital device pursuant to Part 15 of the FCC Rules, designed to provide reasonable protection against harmful interference in a residential installation.
- **FIFO method** – (first in, first out) a system used in batch processing and queues in which the first signal to arrive is processed first.
- **Fixed-frequency monitor** – A monitor that can only be operated at a specific resolution and refresh rate.
- **Flat shading** – → 'Shading'.
- **Flipping** – The image generated in the →back buffer is displayed.
- **Frame buffer** – Part of the graphics memory in which the image next to be displayed on the screen is generated. In addition, transparency effects are calculated in the frame buffer.
- **Front buffer** – is the name for the visible image page in →double buffering.
- **Geometrical transformation** – The position of the object in space is determined from the observer's point of view.
- **Gouraud shading** – → 'Shading'.
- **Graphics accelerator** – refers to a graphics accelerator board, i.e. a board particularly suited for graphics intensive user environments.
- **HighColor** – designates a 15-bpp or 16-bpp (bits per pixel) graphics mode, i.e. 32,768 or 65,536 colors.
- **Horizontal frequency** – The horizontal frequency (scan frequency) of a monitor in kHz. This value must be set in accordance with the operating limits of the monitor, otherwise the monitor might be damaged in extreme cases.
- **Horizontal scan frequency** – The horizontal scan frequency of a monitor in kHz. This value must be set in accordance with the operating limits of the monitor, otherwise the monitor might be damaged in extreme cases.
- **Interpolation** – A video image must be stretched or shrunk in order to fit into the display window. If pixels are simply multiplied (for example, a block of four equally colored pixels represents the original pixel), aliasing effects ("blocks" and "stairs") will occur. This can be avoided by interpolation procedures (using average colors for inserted pixels). Horizontal interpolation is relatively easy to perform, since the pixels are drawn to the screen in lines. Vertical interpolation is more difficult and requires a complete pixel line to be buffered.
- **MIP mapping** – In MIP mapping a number of textures are assigned to an object depending on distance. The representation of the object becomes more detailed as the observer approaches the object.

- **Multifrequency/ Multisync monitor** – A monitor that can be operated at various horizontal scan frequencies, or that automatically adapts itself to different video signals (resolutions).
- **OpenGL** – 3D software interface (3D API). E.g. implemented in Windows NT and available for Windows 95. Based on Iris GL from Silicon Graphics and licensed from Microsoft.
- **Page Flipping** – The image generated in the →back buffer is displayed
- **PCI bus** – Abbreviation of Peripheral Component Interconnect Bus. An advanced bus system, i.e. a system of parallel data lines to transfer information between individual system components, especially to expansion boards.
- **Phong shading** – → 'Shading'.
- **Pixel** – Picture element. Dot in the image.
- **Pixel frequency** – Pixel clock frequency (number of pixels drawn per second in MHz).
- **Primitive** – Simple, polygonal geometrical object, such as a triangle. 3D landscapes are generally broken down into triangles.
- **RAM** – Abbreviation of Random Access Memory. Chip memory of a computer or expansion board that can be read from and written to (unlike ROM = Read Only Memory).
- **RAMDAC** – The RAMDAC converts the digital signals to analog signals on a graphics board. VGA monitors are only capable of processing analog signals.
- **RealColor** – RealColor normally designates a 15-bpp or 16-bpp (bits per pixel) graphics mode, i.e. 32,768 or 65,536 colors).
- **Refresh rate** – or image refresh frequency (in Hz) indicates how many times per second an image on the monitor is refreshed.
- **Rendering** – Process for calculating the representation of a 3D scene, in which the position and color of each point in space is determined. The depth information is held in the →Z buffer, the color and size information is held in the →frame buffer.
- **Resolution** – The number of pixels in horizontal and vertical direction on the screen, for example 640 horizontal by 480 vertical pixels (640 x 480).
- **RGB** – Color information is saved in the Red/Green/Blue color format.
- **ROM** – Abbreviation of Read Only Memory. Semiconductor memory that can only be read and not written to.
- **S-Video** – or S-VHS. Signal transmission of video information, where the signals for →chrominance and →luminance are separated. This results in a higher picture quality.
- **Shading** – Shading or rendering is a way to define the colors on curved surfaces in order to give an object a natural appearance. To achieve this, the surfaces are subdivided into many small triangles. The three most important 3D shading methods differ in the algorithm used to apply colors to these triangles:
Flat shading: the triangles are uniformly colored.
Gouraud shading: The color shades on a triangle are calculated by interpolating the vertex colors, resulting in a smooth appearance of the surface.
Phong shading: the color shades on a triangle are calculated by interpolating the normal vector.
- **Shutter glasses** – Goggles which use stereoscopic LCD projection of 3D scenery to give the observer a strong impression of space.

- **Single buffer** – By contrast with double buffering, where the image buffer is duplicated, the single buffering mode is not able to access the next image, which has already been calculated. This means that animations will run jerkily.
- **Tearing** – A distinction is made in double buffering between the front buffer and the back buffer. The image change between the front buffer and the back buffer is synchronized in tearing.
- **Tessellation** – The objects for 3D calculations are divided up into polygons (triangles) in tessellation. The vertices, color and, if required, transparency values, are determined for the triangles.
- **Textures** – Wrapping a bitmap around an object, including perspective correction, for example wallpaper on a wall or a wood texture on furniture. Even a video can be used as a texture map.
- **TrueColor** – Graphics mode with 16.7 million colors (24 or 32 bits per pixel). In this mode, the color information saved in the display memory is not translated by a look-up table, but passed directly to the D/A converter. This means that the full color information must be saved for each pixel.
- **VESA** – Abbreviation of Video Electronics Standards Association. A consortium for the standardization of computer graphics.
- **VRAM** – Abbreviation for video RAM. Memory chip for fast graphics boards.
- **Z buffer** – 3D depth information (position in the third dimension) for each pixel.

Index

■ Numerics

3D clipping	36, 55
3D graphics display	39
3D pipeline	35, 55

■ A

Addresses	33
AGP	55
Aliasing	55
Alpha blending	55
Anti-aliasing	37
API	37

■ B

Back buffer	37, 55
Back face culling	36
BIOS	55
Bump mapping	36, 55
Bus	55

■ C

CE	4
Chrominance	42, 55
Clipping	55
Color palettes	40
Color tuning	22
COM	38
Composite video	42
CompuServe	49

■ D

D socket	33
DDC	41, 55
Declaration of Conformity	51
Direct 3D	38
DirectColor	40, 55
DirectDraw	38
DMA	33
Double buffer	55
DPMS	56
DRAM	56
Driver	50

■ E

EDO-RAM	56
ELSA World Wide	49

■ F

FCC	4, 56
Filtering	36
Flat shading	37, 56, 57
Flipping	37, 56
Frame buffer	37, 56
Front buffer	37, 56

■ G

Geometrical transformation	35, 56
Gouraud shading	37, 57
Grey scales	40

■ H

Hardware description	33
Heidi	38, 39
HighColor	41, 56
Horizontal frequency	56

■ I

I/O address	33
Immediate mode	39
Installation	6
Internet	49
Interpolation	56
Interrupt	33
IRQ	33

■ L

LocalWeb	49
Luminance	42

■ M

Memory addresses	33
Memory expansion	5
Memory module	6
MIP mapping	36, 56
Mode X	38
Monitor	33

- **O**
 - OLE38
 - OpenGL 38, 39, 57
- **P**
 - Page Flipping57
 - PCI bus57
 - Phong shading 37, 57
 - Pin assignment33
 - Point sampling36
 - Primitive 36, 57
- **R**
 - RAMDAC57
 - Ray tracing37
 - RealColor 41, 57
 - Refresh rate57
 - Rendering 36, 57
 - Repair50
 - Resolution57
 - Retained mode39
- **S**
 - Safety5
 - Scan frequency56
 - Shading 37, 57
 - Shutter glasses57
 - Single buffer58
 - Stencil buffer38
 - Support48
 - Support hotline49
 - S-VHS42
 - S-Video57
- **T**
 - Tearing58
 - Tessellation35, 58
 - Texture35, 58
 - Texture mapping36
 - Transformation36
 - TrueColor 40, 41, 58
- **V**
 - VESA58
 - VESA DDC41
 - VGA40
 - VRAM58
- **W**
 - WWW49
- **Z**
 - Z buffer58